

**PERFORM
BETTER**

WITH SCHEUCH COMPONENTS



PERFORM BETTER WITH SCHEUCH COMPONENTS

As a subsidiary of Scheuch Management Holding GmbH, Scheuch COMPONENTS GmbH boasts extensive expertise in the devices and components business for industrial plant construction. This expertise has been developed over more than 55 years and passed on from generation to generation. With machines and components available in a range of different sizes to suit virtually any industry, Scheuch COMPONENTS provides customers around the globe with solutions featuring sophisticated technology in the areas of radial fans, conveying elements, plant components, exhaust gas cleaning and soundproofing. In all of its work, customer-oriented production and high-quality manufacturing in Austria are always at the heart of the company's activities.



With many years of experience in the use of our products in industrial plant construction, we are in the best possible position to exploit their potential to the full. This results in exceptional added value for our customers, as we are able to make a major contribution to increasing the performance and efficiency of their plants from a technological, economical and ecological point of view – PERFORM BETTER.

Stefan Scheuch
CEO, Scheuch Management Holding GmbH

UNDER THE UMBRELLA OF THE SCHEUCH GROUP: TOGETHER FOR A BETTER WORLD

The Scheuch Group, which has subsidiaries all over the world and its headquarters in Auroldmünster, Upper Austria, is an international leader in technologies for air pollution control. Many plant operators have been benefiting from the Scheuch Group's expertise for decades, particularly in the wood, wood based panels, energy, metal and industrial minerals industries.

The corporate group covers the entire range of services – encompassing sales, project management, design, research and development, produc-

tion, assembly, commissioning and after-sales services – in-house. Scheuch COMPONENTS GmbH, which was founded in 2020, increases the Scheuch Group's focus on the devices and components business.

The company provides exceptional support and sophisticated machines and components with a high manufacturing range. Thanks to its expert knowledge and state-of-the-art technology, top-quality production is guaranteed.

DID YOU KNOW THAT ...

... Scheuch COMPONENTS has an innovation centre with its own research and development department as well as an in-house test site featuring unique test stands?



THE HUMAN TOUCH

One thing we're particularly proud of at Scheuch COMPONENTS is the way in which company founder Alois Scheuch took over a traditional sheet metal fabrication business over 55 years ago and turned it into a major international company. This pioneering spirit is still evident at Scheuch today: Despite the fact that we are still making our products in Auroldmünster in the heart of Upper Austria, we look beyond our familiar horizons every day in everything we do. Nowhere is this demonstrated more clearly than with our employees: Every day, we channel our dedication, expertise, creative approaches and flexibility into tackling the challenges of the future.

In recent years, our production facilities have undergone substantial modernization – among other things, we have invested in automatic welding cells featuring CAD/CAM programming and in a new ERP system for efficient intralogistics.

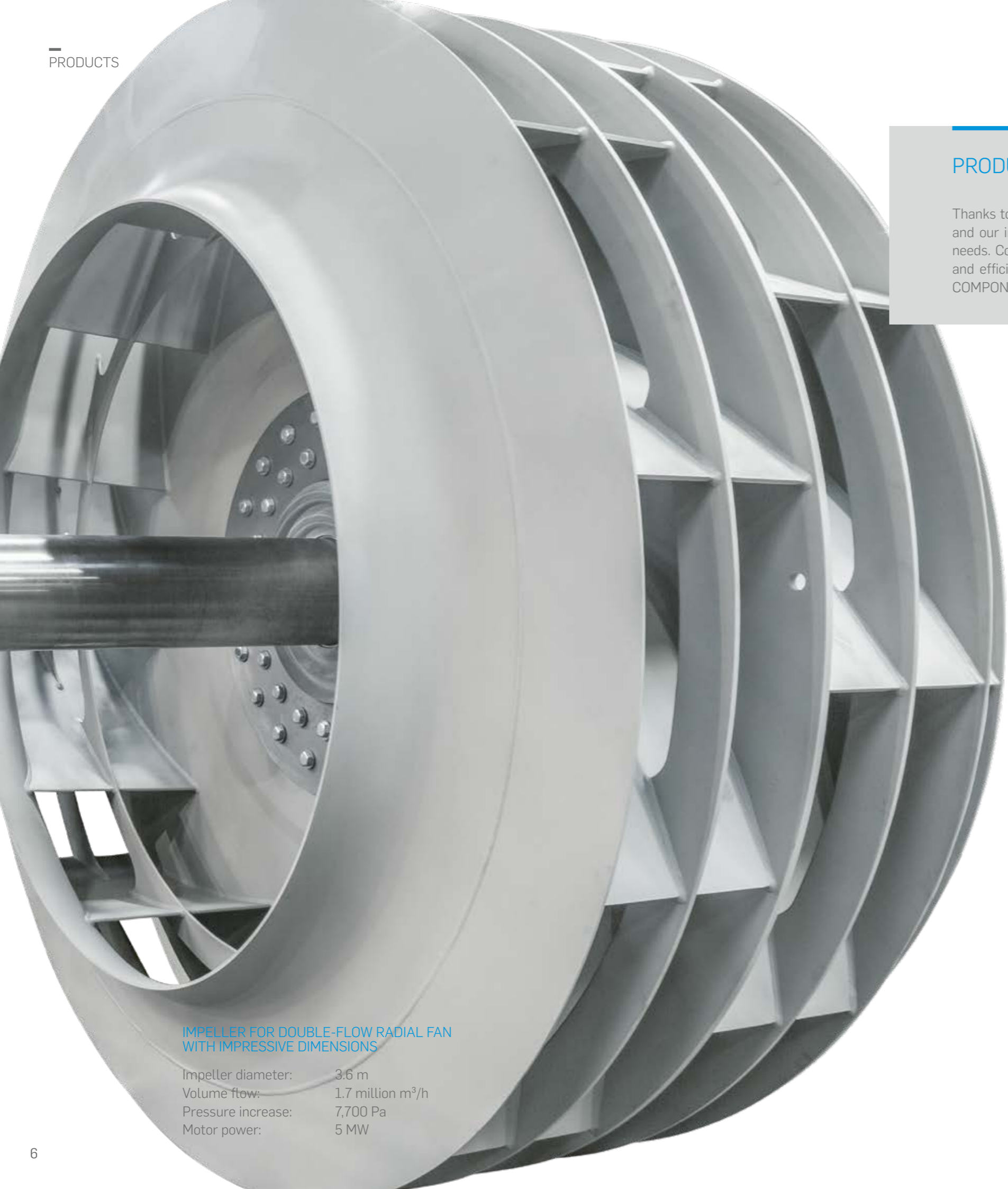
Although technological complexity in the industry is constantly on the increase, interaction between organizations still relies on human relationships. That's why we value our employees so highly and cultivate long-standing, friendly partnerships so we can work together with you to find the best solution.



We love working with our customers to find the right solution for their specific needs. As a technology leader, we are always motivated by the desire to stay one step ahead.

Leonhard Zeilinger
Head of Sales and Product Management
Scheuch COMPONENTS GmbH





IMPELLER FOR DOUBLE-FLOW RADIAL FAN WITH IMPRESSIVE DIMENSIONS

Impeller diameter: 3.6 m
 Volume flow: 1.7 million m³/h
 Pressure increase: 7,700 Pa
 Motor power: 5 MW

PRODUCTS

Thanks to various digitalization measures and with the aid of our electronics and software department and our in-house test site, we are able to tailor our products even more precisely to our customers' needs. Continuous development of the components and the product range improves the performance and efficiency of our customers' plants on a lasting basis, as well as ensuring success for Scheuch COMPONENTS.

RADIAL FANS



The Scheuch COMPONENTS product range offers high-performance fans for every area of application. Thanks to the high level of modularization, we can cater to specific customer requirements and develop tailor-made solutions as a matter of course.

ROTARY VALVES



Rotary valves facilitate the controlled discharge and metering of materials in granular or powder form, such as dust, chips and fibrous bulk materials, and also serve as shut-off devices. Depending on their size and design, our rotary valves offer a throughput volume of 7.5 to 9,122 m³ and thus cover a huge range of applications.

CONVEYOR SCREWS



Pipe screws and trough screws are ideally suited to the continuous transportation of bulk materials. We produce conveyor screws with a throughput volume of 0.25 to 610 m³/h according to our customers' needs.

PLANT COMPONENTS



With flexible designs and models, Scheuch COMPONENTS offers pendulum flaps as well as butterfly valves and control valves to suit individual needs and operating conditions.

EXHAUST GAS CLEANING



Our efficient Odour Emission Control filter concept significantly reduces the impact of odours on employees, nearby residents and the environment. This filter achieves values that are below the compulsory odour limits and therefore offers a reliable way of meeting the legal guidelines.

SOUNDPROOFING



Pipe silencers and baffle silencers as well as soundproofing cabinets and appropriate soundproofing measures directly on our products make it possible to reduce sound emissions in line with customer requirements.



THE HEART OF EVERY SYSTEM

The fan is the core component and driving force of any ventilation system. Thanks to its extensive expertise, Scheuch COMPONENTS guarantees maximum availability and a long service life, regardless of whether the air is carrying chips, fibrous material or aggressive or explosive gas mixtures.

As a result of using fans in complete plants, Scheuch COMPONENTS has acquired a wealth

of experience with specific requirements in a wide range of sectors and industries. This knowledge feeds directly into the ongoing efforts we make to further develop and optimize our product range.

The product portfolio covers a power range up to 5 MW. Furthermore, medium temperatures up to 1,000 °C are possible and specific wear protection can be fitted for the purpose of material transfer.



Professional project management & engineering allow us to keep improving the Scheuch COMPONENTS product range in order to keep fulfilling our customers' requirements.

Reinhard Pauzenberger
Head of Engineering and Project Management
Scheuch COMPONENTS GmbH

DID YOU KNOW THAT ...

... Scheuch COMPONENTS has already produced over 70,000 radial fans?



Find out more.



DOUBLE-FLOW FAN FOR KTM SPORTMOTORCYCLE, MATTIGHOFEN (AT)

KTM AG uses a double-flow fan to simulate the airflow in its long-term motorcycle tests. Built-in heating and cooling make it possible to carry out analyses regarding use in different temperature zones.

Volume flow: max. 180,000 m³/h
Pressure increase: 6,700 Pa
Flow velocity: max. 200 km/h
Motor power: 450 kW

HOT-GAS FAN FOR SENFTENBACHER ZIEGELWERK, RIED I. I. (AT)

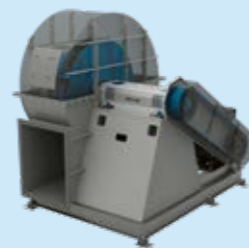
The hot-gas fan from Scheuch COMPONENTS enabled Senftenbacher Ziegelwerk to reduce the energy expenditure for its heating and cooling phases considerably, thus making its production more environmentally friendly.

Volume flow: 4,500 m³/h
Pressure increase: 420 Pa
Temperature: 900 °C
Motor power: 11 kW

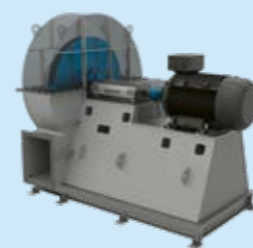
RADIAL FANS



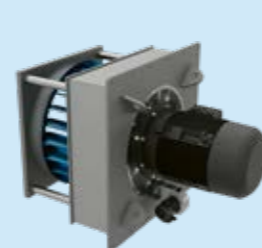
Direct drive



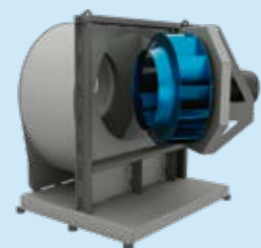
Belt drive



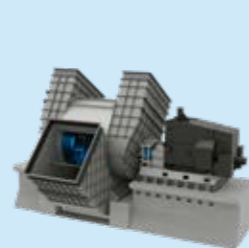
Coupling drive



Hot gas



SwingOut & PullOut



Double-flow



Custom made



Safety and additional equipment

TAILORED TO OUR CUSTOMERS' NEEDS

Selecting the right fan design has a significant impact on investment and operating costs. That's why Scheuch COMPONENTS fans are divided into a finely tuned range of model types. This allows the customer to take the relationship between the total pressure increase and the volume flow into consideration to select the right fan for the optimum operating point – with the best possible

energy conversion factor for energy efficiency.

In installation situations where space is limited, we are able to optimize the inflow by performing calculations for a variety of baffle plate configurations with the help of CFD simulations. This allows us to provide the perfect fan for any customer requirements.



THE RIGHT QUANTITY

Rotary valves from Scheuch COMPONENTS facilitate the controlled discharge and metering of materials in granular or powder form, such as dust, chips and fibrous bulk materials. Since 1980, we have been manufacturing over 1,800 rotary valves annually in Auzolzmünster. A range of designs are available to suit various requirements,

with throughput volumes to accommodate every case. Certain rotary valves are type-examined to Directive 2014/34/EU and are therefore resistant to ignition and flame penetration. As a result, they guarantee the explosion-proof decoupling of key plant components.

ROTARY VALVES



zsg

zsl

zss

zsm

DID YOU KNOW THAT ...

... Scheuch COMPONENTS is able to guarantee explosion-proof decoupling even for stainless steel rotary valves?



Find out more.



... AND THE RIGHT SIZE

Thanks to the wide variety of models, Scheuch COMPONENTS offers rotary valves to suit any requirements.

Four different models provide a throughput volume of 7.5 to 9,122 m³/h, depending on the material to be transported and other conditions. The maximum possible differential pressure varies between 8,000 and 80,000 Pa.

The housing and rotor of the rotary valves are also available in different variants, ensuring that the right design can be selected for the application in question.

SAFE TRANSPORTATION FROM A TO B

Conveyor screws are ideally suited to the continuous transportation of bulk materials. Scheuch COMPONENTS offers both pipe screw and trough screws to cover numerous applications including metering and mixing materials. With screw diameters from 200 to 1,000 mm and throughput vol-

umes from 2 to 500 m³/h, our standard portfolio is suitable for a wide range of different requirements. Alongside customized solutions, our product portfolio also features wear protection concepts, ATEX models and steep conveyor screws.

CONVEYOR SCREWS



Pipe screw



Trough screw

DID YOU KNOW THAT ...

... Scheuch COMPONENTS implements conveyor screws measuring up to 13 metres?



Find out more.

A SMALL COMPONENT THAT MAKES A BIG IMPACT

Our pendulum flaps enable reliable channelling and separation of free-flowing bulk materials out of and into pressure-difference chambers (e.g. fil-

ter systems), at temperatures of up to 300 °C. Butterfly and control valves are used to restrict or completely block the flow of gases.

PLANT COMPONENTS



Pendulum flaps



Butterfly and control valves

DID YOU KNOW THAT ...

... Scheuch COMPONENTS has already produced valves with a diameter of six metres?



Find out more.

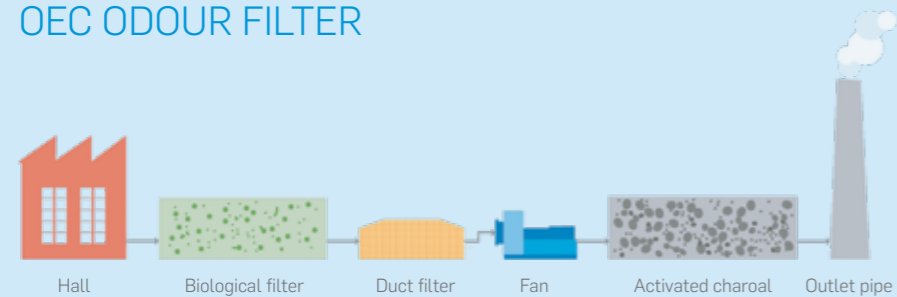


SAYING GOODBYE TO SMELLS

The unpleasant smells produced by facilities such as composting plants, sewage treatment works, farms, food production premises, breweries and recycling plants can be challenging for operators to deal with. Odour filtration systems are essential for keeping the impact of odours on employees,

nearly residents and the environment below the legally prescribed number of odour units per m³. Scheuch COMPONENTS offers the solution to this with its modular Odour Emission Control filter concept – or OEC for short.

OEC ODOUR FILTER



DID YOU KNOW THAT ...

... for all of the projects implemented to date, the values achieved by Scheuch COMPONENTS have been far below those stipulated by law?



Find out more.

OEC ODOUR FILTER FOR FCC AUSTRIA ABFALL SERVICE AG, WIENER NEUSTADT (AT)

Despite a relatively high dust content, we filter out the odours produced by shredded plastic waste without an additional dust filter – using OEC components. This ensures that the plant is extremely cost-effective during operation.

Volumetric flow: 50,000 m³/h

OEC ODOUR FILTER FOR COMPOSTING PLANT, HAAG (AT)

By using OEC solutions to filter odours at the composting plant, we were able to consistently achieve values that were less than half the compulsory odour limits. In 2020, a second plant was implemented using OEC modules.

Plant 1 volumetric flow: 40,000 m³/h

Plant 2 volumetric flow: 28,000 m³/h

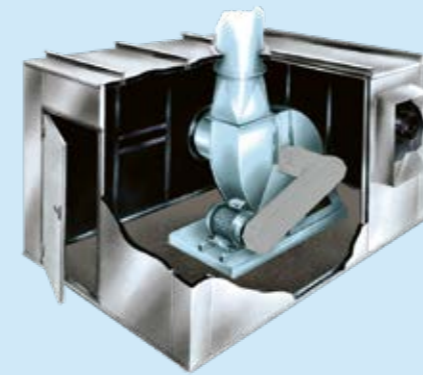


SO POWERFUL AND YET SO QUIET

The requirements for working environments in production facilities are becoming increasingly strict. Scheuch COMPONENTS offers appropriate measures and comprehensive concepts to reduce the noise and vibrations emitted by the machines, ranging from pipe silencers and insulation elements to complete soundproofing cabinets.

Thanks to their extensive expertise in the field of acoustics, the specialists from Scheuch COMPONENTS are able to use measurements and analyses to perfectly assess the acoustic situation at your site. In this way, they are able to single out particular frequency ranges in order to reduce their acoustic power.

SOUNDPROOFING PRODUCTS



DID YOU KNOW THAT ...

... the sound damping measures from Scheuch COMPONENTS can also be adapted to higher temperatures as well as media containing hazardous substances?



Find out more.

ANALYSES & MEASUREMENTS

The experts from Scheuch COMPONENTS conduct and analyse flow simulations. CFD simulations make it possible to improve the inflow and flow pattern not just for Scheuch COMPONENTS' own products, but also for the system as a whole.

As well as measuring the volume flow and analysing the hydraulic data for the system, the specialists will also perform vibration measurements. These measurements make it possible to adapt the retrofit products perfectly to your system to ensure that they are precisely aligned with your power requirements, resulting in much more efficient energy usage.





SERVICES

The Scheuch COMPONENTS service portfolio guarantees to minimize downtimes, improve operational safety and extend the service life of your system.

ASSEMBLY & COMMISSIONING



Both assembly and electrical, mechanical and process-related commissioning are carried out by our own assembly and service technicians. A test run guarantees that the system is perfectly aligned with the specific operating conditions on site. By taking our own measurements, we are able to carry out fine-tuning and ensure that agreed performance guarantees are fulfilled.

INSPECTION & MAINTENANCE



An inspection involves checking your systems and components for correct functioning, tightness and damage and detecting signs of wear at an early stage so that preventive action can be taken. The service team will inspect your Scheuch COMPONENTS components and recommend further actions based on the results. This will keep your system fit for purpose at all times and means that unforeseen repair costs can be prevented.

SPARE PARTS



The timely replacement of wear and spare parts will extend the service life of your systems and ensure optimum value preservation for Scheuch COMPONENTS products. At the same time, it will also help you to increase machine availability and avoid major repairs.

RETROFIT & UPGRADE



Scheuch COMPONENTS' retrofit & upgrade programme will not only reduce your capital expenditure but will also boost the performance of your products and increase production efficiency and energy efficiency. The optimization of sound damping and insulation measures and the replacement of entire system parts or components also form part of this service programme.

Scheuch COMPONENTS successfully designs, builds and delivers **highly efficient components** for air pollution control systems for many industries.

Providing the **best technical expertise** and **support** is what we do!

Scheuch COMPONENTS
PERFORM BETTER



Customer focus is our top priority – thanks to our extensive expertise, we are able to respond quickly and effectively to our customers' requirements. This requires constant adjustments throughout the Scheuch COMPONENTS service portfolio – from the design stage through to the implementation of the systems.

Christian Mayer
Head of Production Planning and Supply Chain Management
Scheuch COMPONENTS GmbH

The logo for Scheuch COMPONENTS, featuring the word "scheuch" in a bold, blue, lowercase sans-serif font.

COMPONENTS

Scheuch COMPONENTS GmbH
Weierfing 68
4971 Aurolzmünster
Austria

Phone +43 / 7752 / 905 – 0

E-Mail office@scheuch-components.com

Web www.scheuch-components.com

Follow us:

in 