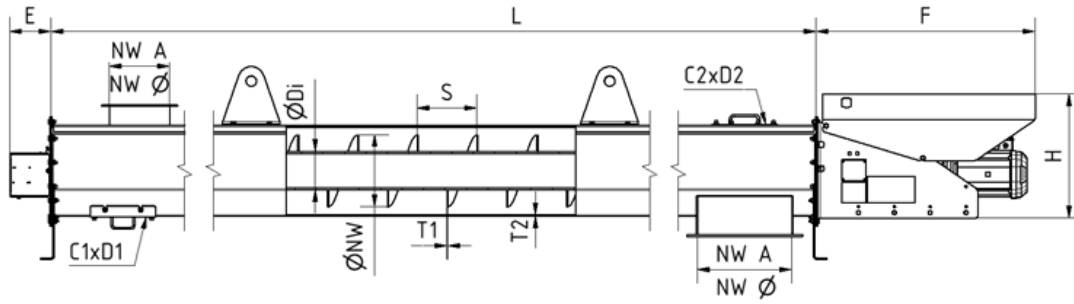
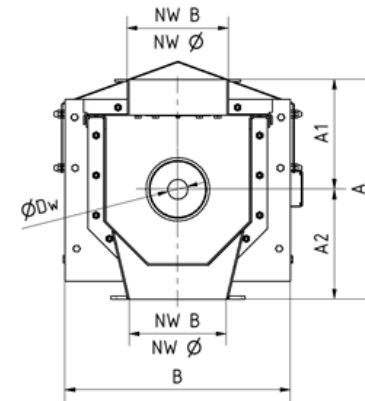
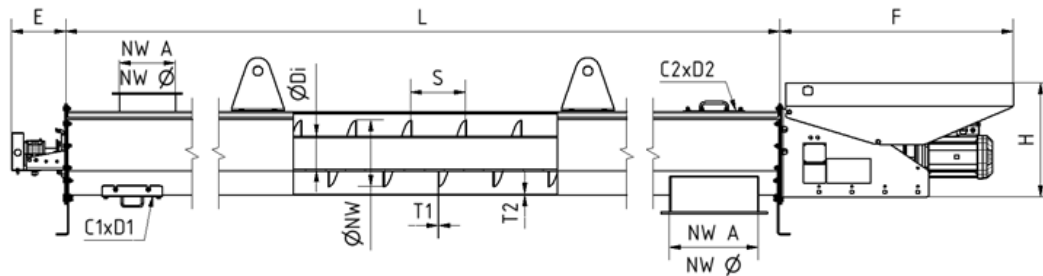


Flanschlager



Stehlager



trough screw conveyor NW0200-0400

fs tsb-NW-T1/T2fs tsbe-NW-Dw

NW = nominal width T1 = screw blade thickness T2 = sheet metal thickness trough Dw = shaft diameter

Annotation:

The trough length L must be a multiple of 150 mm

Application:

For discharging bulk materials

Design:

Flange bearing design:

Conveyed material temperature: <80°C

Max. differential pressure compared to the environment: 250 mbar

Common use at filters in suction feed operation

Not suitable for abrasive conveyed material

Pillow block bearing design:

Conveyed material temperature: <250°C

Max. differential pressure compared to the environment: 400 mbar

Without grease store: for slightly abrasive conveyed material

With grease store: for highly abrasive conveyed material

Accessories:

Weather protection cover, speed monitoring, terminal box, service switch

Options:

Screw blade made of wear resistant material, insulation: 100mm or 130mm

Manufacturer:

Gear motor: SEW

Material:

Trough and screw made of non-alloy structural steel

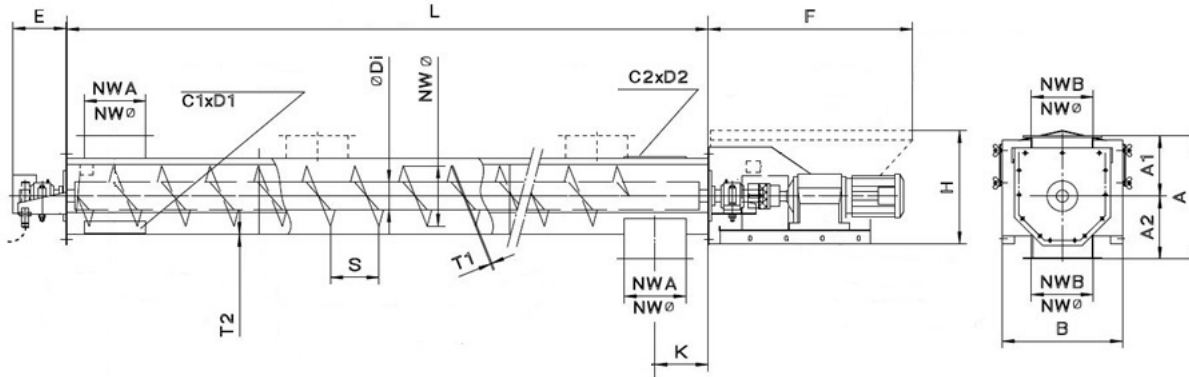
Screw Type	ØNW	Diameter inner tube ØDi	Screw blade thickness T1	Sheet metal thickness trough T2	Screw blade pitch S	Shaft diameter ØDw	Trough length L
fs ts-0200	200	114,3 , 159	4	3 , 4	200	50	1,5m bis 7,95m
fs ts-0250	250	114,3 , 159	4	3 , 4 , 5	200	50	1,5m bis 9,45m
fs ts-0250	250	114,3 , 159	6	3 , 4 , 5	200	50	1,5m bis 9,45m
fs ts-0300	300	114,3 , 159 , 193,7 , 219,1	4	3 , 4 , 5	250	50	1,5m bis 10,5m
fs ts-0300	300	114,3 , 159 , 193,7 , 219,1	4	3 , 4 , 5	250	60	1,5m bis 10,5m
fs ts-0300	300	114,3 , 159 , 193,7 , 219,1	4	3 , 4 , 5	250	70	1,5m bis 10,5m
fs ts-0300	300	114,3 , 159 , 193,7 , 219,1	6	3 , 4 , 5	250	50	1,5m bis 10,5m
fs ts-0300	300	114,3 , 159 , 193,7 , 219,1	6	3 , 4 , 5	250	60	1,5m bis 10,5m
fs ts-0300	300	114,3 , 159 , 193,7 , 219,1	6	3 , 4 , 5	250	70	1,5m bis 10,5m
fs ts-0400	400	159 , 193,7 , 219,1 , 244,5 , 273	4	3 , 4 , 5	315	50	1,5m bis 10,95m
fs ts-0400	400	159 , 193,7 , 219,1 , 244,5 , 273	4	3 , 4 , 5	315	60	1,5m bis 10,95m

70 Conveying and discharge devices > 721 Screw conveyors > trough screw conveyor NW0200-0400

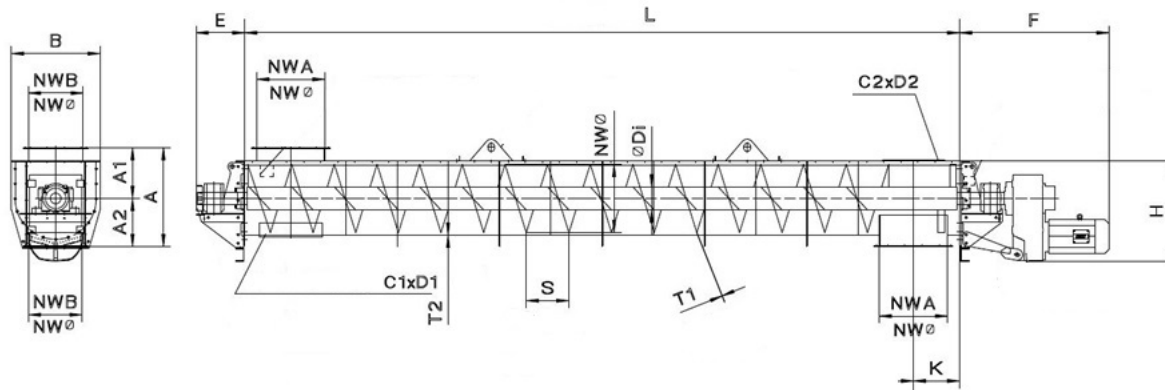
Screw Type	ØNW	Diameter inner tube ØDi	Screw blade thickness T1	Sheet metal thickness trough T2	Screw blade pitch S	Shaft diameter ØDw	Trough length L
fs ts-0400	400	159 , 193,7 , 219,1 , 244,5 , 273	4	3 , 4 , 5	315	70	1,5m bis 10,95m
fs ts-0400	400	159 , 193,7 , 219,1 , 244,5 , 273	6	3 , 4 , 5	315	50	1,5m bis 10,95m
fs ts-0400	400	159 , 193,7 , 219,1 , 244,5 , 273	6	3 , 4 , 5	315	60	1,5m bis 10,95m
fs ts-0400	400	159 , 193,7 , 219,1 , 244,5 , 273	6	3 , 4 , 5	315	70	1,5m bis 10,95m

A	A1	A2	B	C1xD1	C2xD2	E (Pedestal bearing)	E (Flanschlager)	F	H	Mass (kg)
450	220	230	500	0125x0100	0200x0160	275	175	1200	560	260 + 66 x L
500	245	255	500	0160x0125	0250x0200	275	175	1200	560	275 + 74 x L
500	245	255	500	0160x0125	0250x0200	275	175	1200	560	275 + 74 x L
550	275	275	565	0200x0160	0250x0200	280	175	1400	660	290 + 84 x L
550	275	275	565	0200x0160	0250x0200	280	175	1400	660	290 + 84 x L
550	275	275	565	0200x0160	0250x0200	280	175	1400	660	290 + 84 x L
550	275	275	565	0200x0160	0250x0200	280	175	1400	660	290 + 84 x L
550	275	275	565	0200x0160	0250x0200	280	175	1400	660	290 + 84 x L
550	275	275	565	0200x0160	0250x0200	280	175	1400	660	290 + 84 x L
650	325	325	650	0250x0200	0400x0315	280	175	1400	660	325 + 109 x L
650	325	325	650	0250x0200	0400x0315	280	175	1400	660	325 + 109 x L
650	325	325	650	0250x0200	0400x0315	280	175	1400	660	325 + 109 x L
650	325	325	650	0250x0200	0400x0315	280	175	1400	660	325 + 109 x L
650	325	325	650	0250x0200	0400x0315	280	175	1400	660	325 + 109 x L
650	325	325	650	0250x0200	0400x0315	280	175	1400	660	325 + 109 x L

NW0500 - NW0630



NW0800 - NW1000



trough screw conveyor NW0500-1000

fs tsb-NW-T1/T2fs tsbe-NW-Dw

NW = nominal width T1 = screw blade thickness T2 = sheet metal thickness trough Dw = shaft diameter

Annotation:

Gear motors for screw conveyors NW0800 and NW1000 designed as parallel-shaft gearmotor with hollow shaft (FH) - and should be requested if necessary

Application:

For discharging bulk materials

Design:

Pillow block design with grease store:
 Conveyed material temperature: <250°C
 Max. differential pressure compared to the environment: 400 mbar
 For highly abrasive conveyed material

Accessories:

Weather protection cover (up to NW0630), speed monitoring, terminal box, service switch

Options:

Screw blade made of wear resistant material, insulation: 100mm or 130mm

Manufacturer:

Gear motor: SEW

Material:

Trough and screw made of non-alloy structural steel

Screw Type	ØNW	Diameter inner tube ØDi	Screw blade thickness T1	Sheet metal thickness trough T2	Screw blade pitch S	Shaft diameter ØDw	Trough length L
fs ts-0500	0500	219,1 , 244,5 , 273 , 323,9 , 355,6 , 406,4	6	6	400	70	1,5m bis 13m
fs ts-0500	0500	219,1 , 244,5 , 273 , 323,9 , 355,6 , 406,4	6	6	400	90	1,5m bis 13m
fs ts-0500	0500	219,1 , 244,5 , 273 , 323,9 , 355,6 , 406,4	8	6	400	70	1,5m bis 13m
fs ts-0500	0500	219,1 , 244,5 , 273 , 323,9 , 355,6 , 406,4	8	6	400	90	1,5m bis 13m
fs ts-0630	0630	219,1 , 244,5 , 273 , 323,9 , 355,6 , 406,4	6	6	450	70	1,5m bis 13m
fs ts-0630	0630	219,1 , 244,5 , 273 , 323,9 , 355,6 , 406,4	6	6	450	90	1,5m bis 13m

70 Conveying and discharge devices > 721 Screw conveyors > trough screw conveyor NW0500-1000

Screw Type	ØNW	Diameter inner tube ØDi	Screw blade thickness T1	Sheet metal thickness trough T2	Screw blade pitch S	Shaft diameter ØDw	Trough length L
fs ts-0630	0630	219,1 , 244,5 , 273 , 323,9 , 355,6 , 406,4	8	6	450	70	1,5m bis 13m
fs ts-0630	0630	219,1 , 244,5 , 273 , 323,9 , 355,6 , 406,4	8	6	450	90	1,5m bis 13m
fs ts-0800	0800	244,5 , 273 , 323,9 , 355,6 , 406,4 , 457	8	6	560	110	1,5m bis 13m
fs ts-0800	0800	244,5 , 273 , 323,9 , 355,6 , 406,4 , 457	8	6	560	140	1,5m bis 13m
fs ts-1000	1000	244,5 , 273 , 323,9 , 355,6 , 406,4 , 457	8	6	560	140	1,5m bis 13m

A	A1	A2	B	C1xD1	C2xD2	E	F	H	Mass (kg)
735	360	375	820	0250x0200	0400x0315	415	1400	800	350 + 200 x L
735	360	375	820	0250x0200	0400x0315	415	1400	800	350 + 200 x L
735	360	375	820	0250x0200	0400x0315	415	1400	800	350 + 200 x L
735	360	375	820	0250x0200	0400x0315	415	1400	800	350 + 200 x L
890	440	450	820	0250x0200	0400x0315	415	1400	800	390 + 235 x L
890	440	450	820	0250x0200	0400x0315	415	1400	800	390 + 235 x L
890	440	450	820	0250x0200	0400x0315	415	1400	800	390 + 235 x L
890	440	450	820	0250x0200	0400x0315	415	1400	800	390 + 235 x L
1090	525	565	1040	0500x0315	0500x0315	560	1750	1170	1920 + 370 x L
1090	525	565	1040	0500x0315	0500x0315	560	1750	1170	1920 + 370 x L
1340	640	700	1300	0500x0315	0500x0315	560	1750	1300	2300 + 450 x L