

echeuch
COMPONENTS

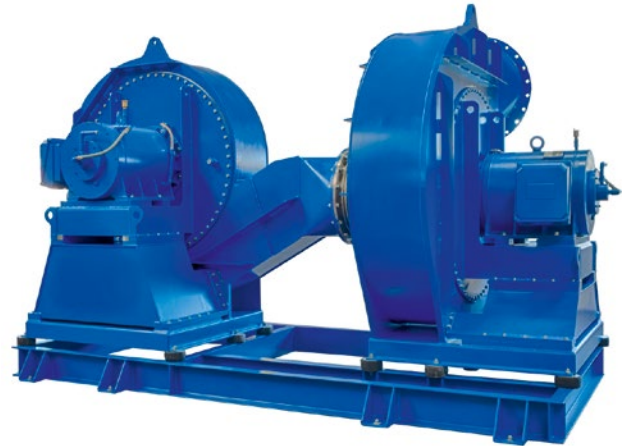
RADIAL FANS

CUSTOM MADE

RADIAL FANS FOR SPECIFIC REQUIREMENTS

Thanks to the high level of modularization, we can cater to specific customer requirements and develop tailor-made solutions as a matter of course. Scheuch COMPONENTS can accommodate special requirements such as:

- Customer-specific fans
- ATEX designs
- Transportation of explosive gas mixtures in 100 % tight design for transporting H₂, for example
- Pressure-shock-resistant designs
- Two-stage or multi-stage designs for high pressure levels
- Special materials such as stainless steel, aluminium, Cr-Ni steels and nickel-based alloys
- Wear-protected designs
- Application-specific extras
 - Water injection
 - Locking brakes
 - Special lubricants
 - Permanent lubricators
 - Emergency motors
 - Special seals
 - Sensors
 - Etc.

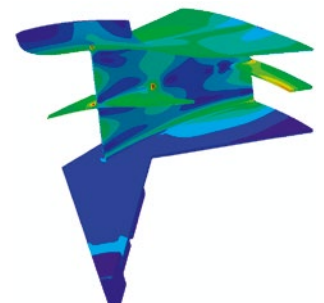
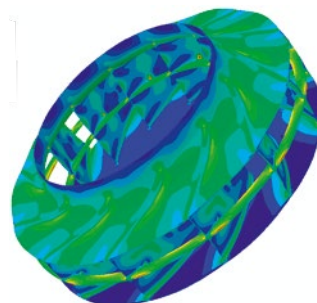
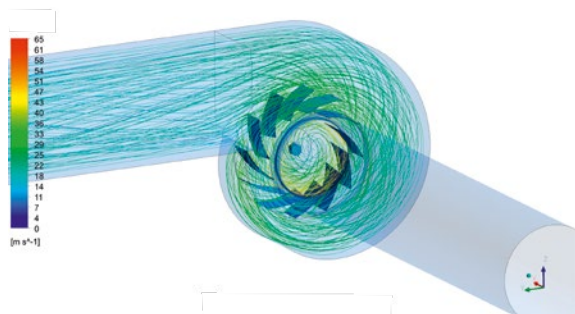


Gas-tight radial fan in two-stage design for transporting hydrogen.



SIMULATIONS

When it comes to tailor-made products and customer-specific solutions, we use modern design and simulation processes to ensure that the inflow conditions and execution of the solution meet the customer's requirements.



For more information, visit
www.scheuch-components.com/en

Scheuch COMPONENTS GmbH
Weierfing 68
4971 Auroldmünster
Austria
Phone +43 7752 905 - 0
E-Mail office@scheuch-components.com
Web www.scheuch-components.com