

**scheuch**  
COMPONENTS

# RADIAL FANS

---

WITH DIRECT DRIVE, BELT  
DRIVE OR COUPLING DRIVE

# THE HEART OF ANY VENTILATION SYSTEM

With 3 different types of drive on offer, along with 6 impeller types, 12 model series and 31 nominal widths, Scheuch COMPONENTS provides an extensive range of radial fans for industrial use in all kinds of applications. Various types of wear protection options are available for transporting abrasive media. A version with ATEX conformity (plus corresponding certification) is available for use in potentially explosive atmospheres or for transporting potentially explosive media. Sensor values relating to bearing temperatures, vibration velocities or speed monitoring, for instance, provide information about the current state of the equipment and can be evaluated during operation.

## RADIAL FAN WITH DIRECT DRIVE

The impeller is installed directly on the motor shaft, creating a compact design that requires very little maintenance.

Volume flow: Up to approx. 180,000 m<sup>3</sup>/h  
 Pressure increase: Up to approx. 25,000 Pa  
 Temperature: Up to approx. 250 °C



## RADIAL FAN WITH BELT DRIVE

Thanks to an arrangement that includes a belt drive and intermediate shaft, it is possible to achieve additional speed stages even without a frequency converter. The high-quality, low-maintenance belts mean that there is no need for re-tensioning and service intervals can be extended.

Volume flow: Up to approx. 650,000 m<sup>3</sup>/h  
 Pressure increase: Up to approx. 25,000 Pa  
 Temperature: Up to approx. 500 °C



## RADIAL FAN WITH COUPLING DRIVE

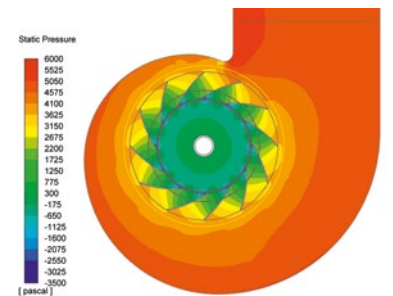
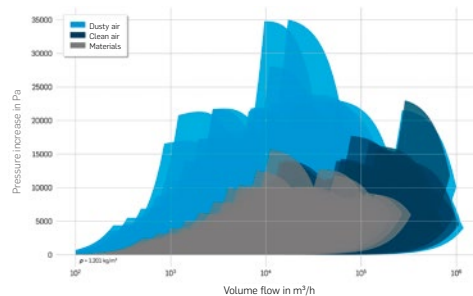
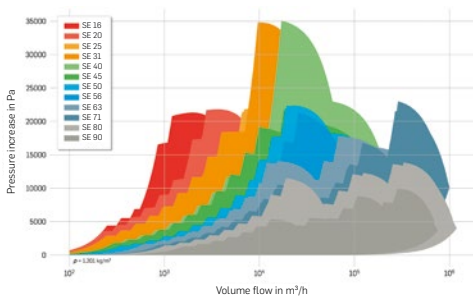
In this case, the drive takes the form of an elastic coupling acting on the intermediate shaft – without the kind of upstream transmission that would be found on a belt drive. In situations involving larger dimensions, the fan components can be embedded into a concrete foundation instead of a steel bracket.

Volume flow: Up to approx. 720,000 m<sup>3</sup>/h  
 Pressure increase: Up to approx. 30,000 Pa  
 Temperature: Up to approx. 500 °C



## RADIAL FANS PERFORMANCE PORTFOLIO

In addition to the standard portfolio, tailored solutions can also be created in consultation with the customer – including gas-tight fans for transporting hydrogen, multi-stage arrangements for high pressure levels, versions with wear protection or other accessories, and fans for special installation situations. Double-flow radial fans or hot-gas fans are also available for large volume flows or high temperatures.



For more information, visit [www.scheuch-components.com/en](http://www.scheuch-components.com/en)

Scheuch COMPONENTS GmbH  
 Weierfing 68  
 4971 Auroldmünster  
 Austria  
 Phone +43 7752 905 - 0  
 E-Mail [office@scheuch-components.com](mailto:office@scheuch-components.com)  
 Web [www.scheuch-components.com](http://www.scheuch-components.com)